

# a new SMOOTH experience...

---

## 1 LINE 4 RITUALS

A brand new line to meet the needs of women who desire smooth, healthy-looking, rejuvenated and disciplined hair with immediate but lasting effects.

From perfect smoothness to the enhancement of the natural texture, for fluid, shiny and defined hair.

smooth EXPERIENCE is a versatile and professional collection of 6 highly performing products designed to create 4 different beauty rituals: FILLER HIGH GLOSS SPA, GLASS HAIR LAMINATION, GOODBYE FRIZZ and PERFECT SMOOTH.

EXPRESS

1

FAST & EASY

### filler high gloss SPA *no heat tools*

---

EXPRESS RITUAL

*Plumps, restructures and rejuvenates hair by eliminating imperfections.*

*Same times and rituals as a standard hair care service but with high-performance products.*

the result...

*Immediate softness, shine and fullness up to 4 weeks.*

*Hair is lightweight and clean for longer.*

| COLD BOTOX-LIKE |

EXPRESS

2

FAST & EASY

### glass hair lamination

---

EXPRESS RITUAL

*The treatment loved by influencers and celebrities around the world.*

*High gloss cosmetic lifting.*

the result...

*Immediate shine, softness and smoothness for up to 4 weeks.*

THERAPY

3

### goodbye frizz

---

THERAPY RITUAL

*Loose the frizz and keep your curls! Transforms wavy, curly, voluminous and frizzy hair into more manageable hair, controlling frizz, reducing volume while keeping the natural shape of the hair*

the result...

*Curly and wavy hair is defined, manageable and soft for up to 10 weeks.*

| HOT BOTOX-LIKE |

THERAPY

4

### perfect smooth

---

THERAPY RITUAL

*Transforms frizzy, curly and wavy hair into perfectly smooth, silky and disciplined hair, remodeling the hair structure without stressing it.*

the result...

*Super smooth, shiny and manageable hair up to 10 weeks.*

| HOT BOTOX-LIKE |

# EXPRESS RITUALS

## filler high gloss SPA *no heat tools* EXPRESS RITUAL

COLD BOTOX-LIKE

### products set

*Plumps, restructures  
and rejuvenates hair by eliminating  
imperfections.*

*Same times and rituals as a  
standard hair care service but with  
high-performance products.*

*the result...*

*Immediate softness, shine  
and fullness up to 4 weeks.*

*Hair is lightweight  
and clean for longer.*



PRE-TREAT  
SHAMPOO



FILLER  
CONDITIONER



INSTANT HIGH  
GLOSS WATER



HAIR FILLER  
SERUM

FAST & EASY

EXPRESS

1

25

## glass hair lamination EXPRESS RITUAL

*The treatment loved by influencers  
and celebrities around the world.*

*High gloss cosmetic lifting*

*the result...*

*Immediate shine, softness and  
smoothness for up to 4 weeks.*

### products set



PRE-TREAT  
SHAMPOO



FILLER  
CONDITIONER



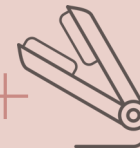
INSTANT HIGH  
GLOSS WATER



HAIR FILLER  
SERUM



HD SMOOTH  
AND PROTECT



FAST & EASY

EXPRESS

2

35

step 1



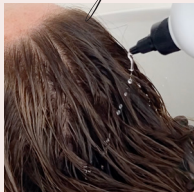
Apply **PRE-TREAT SHAMPOO** to damp hair. Create an even lather, then rinse. In case of resistant, natural, coarse hair, shampoo twice.

step 2



Apply **FILLER CONDITIONER** to towel-dried hair focusing on the lengths and ends and leave on for 10 minutes then rinse.

step 3



After rinsing, apply **INSTANT HIGH GLOSS WATER**, to damp hair, focusing on the lengths and ends. Comb to distribute evenly and rinse.

step 4



Apply **HAIR FILLER SERUM** to towel-dried hair, then proceed with drying the hair, with brush or diffuser.

Home maintenance is essential to prolong in-salon results. To maintain smooth, soft and shiny hair we recommend the use of **FILLER SHAMPOO**, **FILLER CONDITIONER** and **HAIR FILLER SERUM**.

the result...

Immediate softness, shine and fullness up to 4 weeks.

Hair is lightweight and clean for longer.

before

after



...wavy  
or smooth



technical tips

If using after colouring service, gently cleanse the hair with an after colour shampoo (do not use **PRE-TREAT SHAMPOO**) then proceed with step 2.

If using after re-growth colour service, when rinsing the colour, use **PRE-TREAT SHAMPOO** for the second shampoo, then proceed with step 2.